

EVERTZ GRINDING

WITH AUTOMATIC DEFECT DETECTION

GUARANTEED QUALITY

GUARANTEED TRACEABILITY

YOUR SURFACE CONDITIONING SPECIALISTS

Strategic partnership : **EVERTZ** and **SAPOTECH** join forces to offer steel makers a unique solution to significantly improve yield loss.

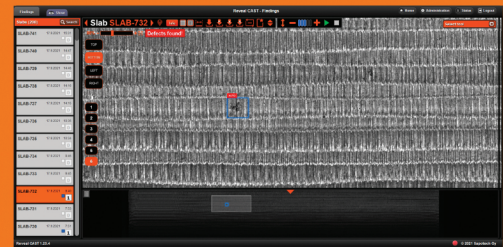
Reveal CAST automatic surface inspection together with Evertz superior grinding technology maximizes customer benefits.

Grinding **Reveal CAST** key features :

- Fast on-line inspection of ground slabs, blooms, billets...
- Direct and automatic quality feedback
- Residual defect detection for automatic spot grinding
- Applicable for hot and cold grinding
- Multi-camera solution to automatically detect the smallest defects
- Reveal Software Platform to record and track every ground product



EVERTZ grinding machine with « Reveal CAST » automatic surface defect detection system



« Reveal CAST » automatic surface defect detection interface

THE **EVERTZ**
GROUP



THE EVERTZ GROUP
2, rue des Girondins
L-1626 LUXEMBOURG
+352 (0)27 11 61 00
info@evertz-group.com

SAPOTECH



SAPOTECH
Paavo Havaksen tie 5 D
FIN - 90570 OULU
+358 (0)40 637 1117
info@sapotech.fi